

WE SPECIALISE IN THE HUNTING OF
DANGEROUS GAME & PLAINS GAME
SINCE 2009



ONCE UPON A **DARK CONTINENT**



INTERNATIONAL PRICE LIST
2025





ABOUT US

This Is Africa Safaris is owned and operated by A.H van Heerden, established in 2009 and situated in the North Eastern part of South Africa known as the Lowveld, home to the jewel of African game reserves, the Kruger National Park, and South Africa's prime big five destination.

We specialize in hunting safaris in and around the private game reserves in this area, as well as the Limpopo Valley, and the Kalahari in the North West bordering Botswana.



KRUGER NATIONAL PARK
 ESTABLISHED 1898
 7,523 SQUARE MILES
 336 SPECIES OF TREES
 49 SPECIES OF FISH
 34 SPECIES OF AMPHIBIANS
 144 SPECIES OF REPTILES
 507 SPECIES OF BIRDS
 147 SPECIES OF MAMMALS

GREATER KRUGER NATIONAL PARK
 Greater Kruger National Park, is joint venture between the Kruger National Park and the Associated Private Nature Reserves. Together they have an area of more than 7,722 sq miles under their joint conservation.

■ KRUGER NATIONAL PARK
 ■+ GREATER KRUGER NATIONAL PARK

Whether you are interested in hunting elephant, Cape buffalo, pursuing the big cats, or after the abundance of plainsgame that South Africa has to offer, we at This Is Africa Safaris will make sure your safari is an unforgettable one.

Our total concession areas are in excess of 250 000 acres across the Limpopo Lowveld, Limpopo Valley & Kalahari Bushveld.

We cater for the rifle & bowhunter, as well as first time visitors or the seasoned hunter returning to Africa.

For the non hunter we offer Photographic Safaris to the Kruger National Park, sight seeing in and around the Blyde Canyon, or even five star spa treatments. These excursions are very popular as an add on to any safari.

**BIG GAME
HUNTING AREA**





HUNTING PRICE LIST & DAILY RATES 2025

DAILY RATES: PLAINSGAME

| | |
|---------------------------------|-----------------|
| 1 x 1 | US\$ 380 |
| 2 x 1 | US\$ 330 |
| Extra PH if needed (Plainsgame) | US\$ 200 |
| Plainsgame Observer | US\$ 290 |
| Touring/Photographic | US\$ 440 |
| Night Hunts (unplanned) | US\$ 85 |

| | |
|-------------------|--------------------|
| Baboon | US\$ 375 |
| Black Wildebeest | US\$ 1 650 |
| Blesbuck Common | US\$ 750 |
| Blesbuck White | US\$ 1 250 |
| Blue Wildebeest | US\$ 1 450 |
| Buffalo Bull | US\$ 10 850 |
| Buffalo Cow | US\$ 2 950 |
| Burchells Zebra | US\$ 1 850 |
| Bushbuck | US\$ 1 750 |
| Bushpig | US\$ 1 800 |
| *Caracal | US\$ 2 500 |
| *Civet | US\$ 2 500 |
| *Crocodile From | US\$ 4 800 |
| Duiker Grey | US\$ 650 |
| Duiker Blue | US\$ 2 600 |
| Duiker Red | US\$ 2 800 |
| Eland | US\$ 3 250 |
| Elephant From | US\$ 18 500 |
| Gemsbuck Common | US\$ 1 850 |
| Gemsbuck Golden | US\$ 2 950 |
| Gemsbuck Red | US\$ 5 900 |
| Giraffe | US\$ 2 600 |
| *Genet | US\$ 1 350 |
| Golden Wildebeest | US\$ 2 950 |
| *Hyena Brown | US\$ 3 650 |
| *Hyena Spotted | US\$ 4 250 |
| *Hippo | US\$ 9 650 |
| *Honey Badger | US\$ 2 500 |
| Impala | US\$ 650 |

* INDICATION OF WHERE PERMITS
ARE NEEDED TO BE ISSUED IN
ADVANCE OF THE HUNT

ALL HUNTING DONE AT OWN RISK

DAILY RATES: BIG FIVE

| | |
|-------------------------------|-----------------|
| 1 x 1 | US\$ 450 |
| 2 x 1 | US\$ 400 |
| Big Five Observer | US\$ 300 |
| Extra PH if needed (Big Five) | US\$ 280 |

**AIRPORT TRANSFERS NOT INCLUDED -
\$160 TO \$750 DEPENDING ON PICK-UP**

| | |
|-------------------|--------------------|
| *Jackal | US\$ 300 |
| Kings Wildebeest | US\$ 4 900 |
| Klipspringer | US\$ 2 400 |
| Kudu | US\$ 3 750 |
| *Leopard | P.O.R |
| *Lion Wild | P.O.R |
| Lechwe Red | US\$ 4 200 |
| Nyala | US\$ 3 300 |
| *Oribi | US\$ 3 000 |
| Ostrich | US\$ 850 |
| *Porcupine | US\$ 350 |
| Red Hartebeest | US\$ 1 850 |
| Reedbuck Common | US\$ 1 950 |
| Reedbuck Mountain | US\$ 1 650 |
| Reedbuck Vhaal | US\$ 2 650 |
| *Rhino | P.O.R |
| Roan | US\$ 7 500 |
| Sable | US\$ 6 750 |
| *Serval | US\$ 3 000 |
| *Sharpes Grysbok | US\$ 2 650 |
| Springbuck Common | US\$ 785 |
| Springbuck Black | US\$ 1 550 |
| Springbuck White | US\$ 1 850 |
| Springbuck Copper | US\$ 2 450 |
| Steenbuck | US\$ 750 |
| *Suni | US\$ 2 500 |
| Tsessebe | US\$ 3 250 |
| *Vervet Monkey | US\$ 250 |
| Waterbuck | US\$ 3 250 |
| Warthog | US\$ 750 |
| Buffalo < 42" | US\$ 12 800 |
| Buffalo < 44" | US\$ 14 800 |
| Buffalo > 44" | P.O.R |
| Sable < 44" | US\$ 7 350 |
| Sable < 46" | US\$ 7 650 |
| Sable > 46" | P.O.R |

PRICES SUBJECT TO CHANGE

PROPOSED PACKAGES

PACKAGES 1

GAME RESERVES 2025



Bookings will be confirmed by a non refundable deposit of all daily rates or 50% of total safari fees except if arranged otherwise on quotation. A legal hunting contract will be forwarded indicating information regarding prices, dates, daily rates etc. This contract will be signed in advance of any hunt, where after the deposit will be payable. All packages includes daily rates, trophy, permit & reserve fees. Prices exclude VAT, cash payment recommended. Full payment at commencement of the safari, and to be settled in full before the last day of the safari, no exceptions. Limited quota for 2025 and 2026.

SABLE & ROAN HUNT

5 DAYS

1 x SABLE BULL
1 x ROAN BULL

\$ 16 950

ALL INCLUSIVE

1 x HUNTER
1 x OBSERVER

ENTRY PACKAGE HUNT

5 DAYS

1 x IMPALA, WARTOG,
BLUE WILDEBEEST,
BLESBUCK

\$ 4 775

ALL INCLUSIVE

1 x HUNTER

BUFFALO COW HUNT

5 DAYS

1 x BUFFALO COW HUNT

\$ 6 400

ALL INCLUSIVE

1 x HUNTER
1 x OBSERVER

RHINO BULL HUNT

5 DAYS

1 x RHINO BULL HUNT

\$ 33 550

ALL INCLUSIVE

1 x HUNTER
1 x OBSERVER

CAPE BUFFALO BULL HUNT

7 DAYS

1 x CAPE BUFFALO BULL HUNT

\$ 14 950

ALL INCLUSIVE

1 x HUNTER
1 x OBSERVER

Continue for more packages.....

PROPOSED PACKAGES

Continued....

GAME RESERVES 2025

| BUFFALO BULL & COW HUNT | BUFFALO BULL & SABLE HUNT | ELEPHANT BULL HUNT (NON EXPORT) | ELEPHANT BULL HUNT (CITES) | ELEPHANT & BUFFALO HUNT |
|--|---|--|-----------------------------------|--|
| 7 DAYS | 7 DAYS | 5 DAYS | 5 DAYS | 7 DAYS |
| 1 x BUFFALO BULL 1 x BUFFALO COW HUNT | 1 x BUFFALO BULL 1 x SABLE BULL HUNT | 1 x ELEPHANT BULL HUNT | 1 x 25 LB ELEPHANT BULL HUNT | 1 x 30 LB ELEPHANT BULL 1 x BUFFALO BULL HUNT |
| \$ 17 650 | \$ 20 650 | \$ 21 550 | \$ 24 750 | \$ 42 850 |
| ALL INCLUSIVE | ALL INCLUSIVE | ALL INCLUSIVE | ALL INCLUSIVE | ALL INCLUSIVE |
| 1 x HUNTER | 1 x HUNTER | 1 x HUNTER | 1 x HUNTER | 1 x HUNTER |
| 1 x OBSERVER | 1 x OBSERVER | 1 x OBSERVER | 1 x OBSERVER | 1 x OBSERVER |

Fly-in to closest airport except if arranged otherwise. Herewith a list of airports below:

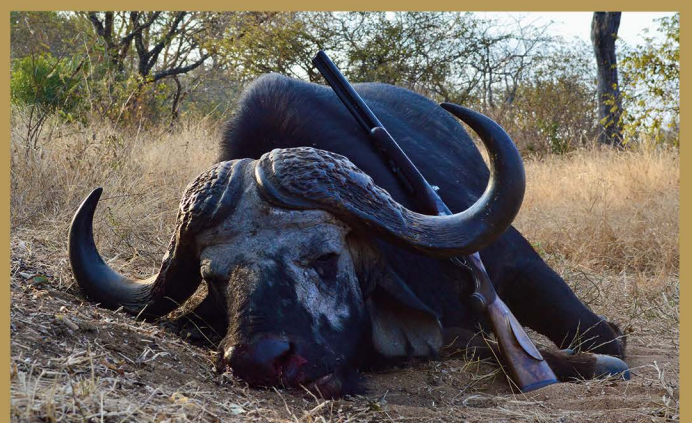
- OR Tambo International - **Johannesburg, Gauteng**
- Eastage Airport - **Hoedspruit, Limpopo**
- Kruger International Airport - **Nelspruit, Mpumalanga**
- Polokwane International Airport - **Polokwane, Limpopo**



1. When packages are combined there will be discount.
2. Minimum of 5 days on any given booking, depending on each hunt, the total days will be calculated
3. Our areas are based in the Limpopo Province, Mpumalanga Province and Nort West Province, Kalahari bushveld close to Tosca, South Africa.

- A deposit of all daily rates or 50% of the total safari fees will confirm the booking except if arranged otherwise on quotation.
- Prices are subject to foreign currency fluctuations between the time of quotation and the safari date.
- The balance is payable at commencement of the safari, and to be settled in full before the last day of the safari, no exceptions.

PLAINS GAME PACKAGES ON REQUEST



PACKAGES 2

PROPOSED PACKAGES LIMPOPO LOWVELD REGION 2025

Timbavati, Klaserie, Umbabat & Balule form the Association of Private Nature Reserves. The APNR is over 300 000 acres in extent, and is based on the Eastern side of the world famous Kruger National Park, which is situated in the Limpopo and Mpumalanga Provinces of South Africa. There is no boundary fence between the Kruger National Park and the APNR. Together, these areas constitute the Greater Kruger Park, which is over 5 Million acres in size, which is bigger than some countries. The Umbabat Private Nature Reserve and Balule is a prestige environment with no boundary fences or internal fences. This is one of the wildest hunting areas available in South Africa and until recently was only experienced by hunters of a by-gone are. This fantastic area is where This Is Africa Safaris had done most of its big five hunting in the past, and still do even though our quota has decreased over the years. For the discerning hunter or avid photographer, the APNR is an experience of a lifetime, giving one the overall African adventure.

This area is 40 000ha with the greater Kruger National Park. Bookings will be confirmed by a non refundable deposit of all daily rates or 50% of total safari fees. Balance will be payable in full the day before the hunt will commence. A legal hunting contract will be forwarded indicating important information regarding prices, date, daily rates etc. This contract will be signed in advance of any hunt, where after the deposit will be payable. All packages includes daily rates, trophy permit & park fees. Prices exclude VAT, cash payment recommended. Hunting quotas are relatively small considering the quality of game that occurs. As a result hunting pressure on the game population are extremely low. It is a true pleasure & great privilege to hunt in these magnificent game reserves. Hunting proceeds in these reserves are used to manage these reserves and combat poaching.



ELEPHANT BULL - 40LB HUNT

**5
DAYS**

\$ 43 450
ALL INCLUSIVE

1 x HUNTER
1 x OBSERVER

ELEPHANT BULL - 30LB HUNT

**5
DAYS**

\$ 34 450
ALL INCLUSIVE

1 x HUNTER
1 x OBSERVER

CAPE BUFFALO BULL HUNT

**5
DAYS**

(from)
\$ 15 500
ALL INCLUSIVE

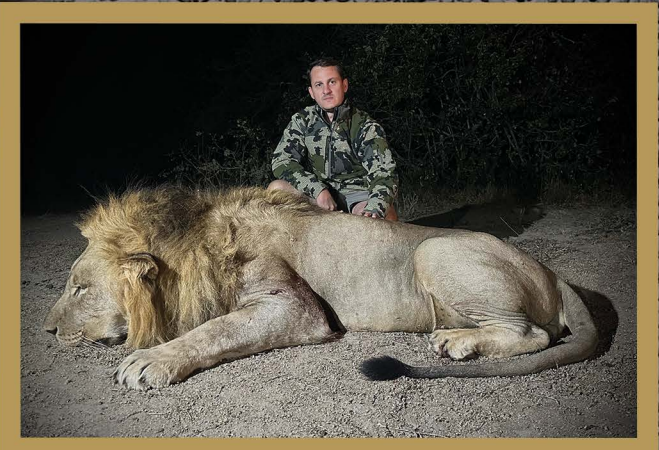
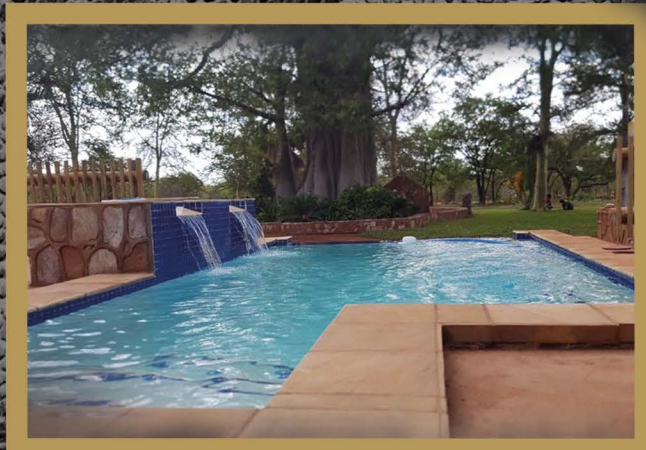
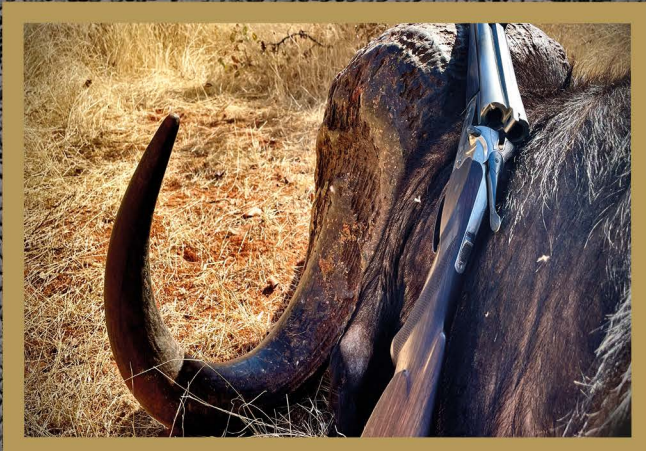
1 x HUNTER
1 x OBSERVER



Fly-in to closest airport except if arranged otherwise. Herewith a list of airports below:

- OR Tambo International - **Johannesburg, Gauteng**
- Eastage Airport - **Hoedspruit, Limpopo**
- Kruger International Airport - **Nelspruit, Mpumalanga**
- Polokwane International Airport - **Polokwane, Limpopo**

1. When packages are combined there will be discount.
2. Minimum of 5 days on any given booking, depending on each hunt, the total days will be calculated
3. Our areas are based in the Limpopo Province, Mpumalanga Province and Nort West Province, Kalahari bushveld close to Tosca, South Africa.



DAILY RATES:

Include:

- full accommodations,
- daily laundry services
- all meals, soft drinks, bottled water, as well as beer and local wines in moderation, full board,
- services of professional hunters, hunting vehicles, trackers, skinners and all camp/lodge staff,
- transportation in the hunting area,
- field preparation of trophies,
- trophy delivery to taxidermy in our area (Safari Taxidermy),
- collection & return to nearest commercial airport.

Exclude: (Responsibility of the client)

- trophy fees for animals killed, wounded or lost,
- trophy packing & transportation,
- temporary rifle import/export permits, nor rifle or ammunition hire,
- collection & return to commercial airport not nearest to hunting area (unless agreed otherwise),
- air charters / airfares,
- medical and accident insurance cover,
- any expenditure not part of the agreement on safari,
- any items of personal nature.

RIFLE HIRE:

- Big 5: \$80 per day, \$100 per box of 20 ammo
- Plains Game: \$50 per day, \$250 per box of 20 ammo

CONTACT US



A.H. VAN HEERDEN

Owner/Outfitter: 202408000013922
Professional Hunter: 202408000013727



Hoedspruit, Limpopo, South Africa



info@thisafricasafaris.com



www.thisafricasafaris.com



+27 82 383 8833

 THIS IS AFRICA SAFARIS.COM

 THIS_IS_AFRICA_SAFARIS

